

CoroMill® 245

Light-cutting face mill for heavy roughing to mirror finishing

Application

- Face milling
- Roughing to finishing

ISO application area:



Benefits and features

- Easy to use and high productivity
- Light cutting with low power consumption
- Close tolerance combined with the wiper insert for superior surface finish
- 45° face milling cutter
- Demanding roughing to mirror finishing
- Smooth and light-cutting action for low cutting forces
- Available in exchangeable cassette system, a concept for rough to semi-finishing of steel



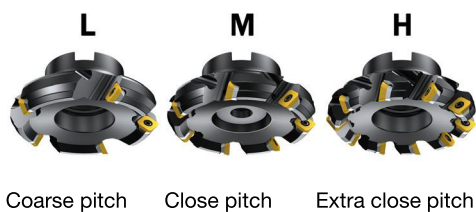
www.sandvik.coromant.com/coromill245

Couplings

- Arbor
- Cylindrical Shank

Inserts

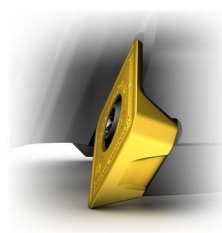
- Four cutting edges
- Wide range of grades and geometries including ceramic and CBN grades
- Wiper inserts for high feed finishing



Coarse pitch

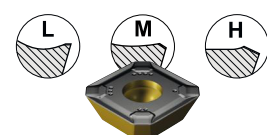
Close pitch

Extra close pitch



Light cutting action

Single-sided positive inserts positioned to give a smooth cutting action and very low cutting forces.



I12



I14



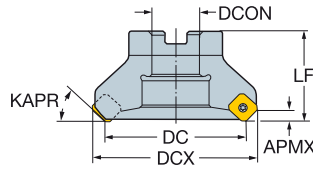
N6

CoroMill® 245 face milling cutter

Arbor

STDNO
KAPR

ISO 6462:2011
45°



| | | | | | | Dimensions, mm | | | | | | | | | |
|-------|--------------------|--------------------|---------------|-----------------|-----------------|----------------|-------|-------|-------|------|-------|-------|------|-------------|-------------|
| DC | CZC _{MIS} | APMX _{FW} | Ordering code | | DCON | ISO | DBC | DCX | LF | (NM) | (KG) | RPMX | CICT | MIID | |
| 50.0 | 12 | 22 | 6.00 | 3 | R245-050Q22-12L | 22.0 | A | 62.5 | 40.0 | 3.0 | 0.65 | 16250 | 3 | R245-12T3.. | |
| | 12 | 22 | 6.00 | 4 | R245-050Q22-12M | 22.0 | A | 62.5 | 40.0 | 3.0 | 0.67 | 16250 | 4 | R245-12T3.. | |
| | 12 | 22 | 6.00 | 5 | R245-050Q22-12H | 22.0 | A | 62.5 | 40.0 | 3.0 | 0.62 | 16250 | 5 | R245-12T3.. | |
| 63.0 | 12 | 22 | 6.00 | 4 | R245-063Q22-12L | 22.0 | A | 75.5 | 40.0 | 3.0 | 0.89 | 14400 | 4 | R245-12T3.. | |
| | 12 | 22 | 6.00 | 5 | R245-063Q22-12M | 22.0 | A | 75.5 | 40.0 | 3.0 | 0.84 | 14400 | 5 | R245-12T3.. | |
| | 12 | 22 | 6.00 | 6 | R245-063Q22-12H | 22.0 | A | 75.5 | 40.0 | 3.0 | 0.87 | 14400 | 6 | R245-12T3.. | |
| 80.0 | 12 | 27 | 6.00 | 4 | R245-080Q27-12L | 27.0 | B | 92.5 | 50.0 | 3.0 | 1.50 | 12700 | 4 | R245-12T3.. | |
| | 12 | 27 | 6.00 | 6 | R245-080Q27-12M | 27.0 | B | 92.5 | 50.0 | 3.0 | 1.45 | 12700 | 6 | R245-12T3.. | |
| | 12 | 27 | 6.00 | 8 | R245-080Q27-12H | 27.0 | B | 92.5 | 50.0 | 3.0 | 1.40 | 12700 | 8 | R245-12T3.. | |
| | 18 | 32 | 10.00 | 4 | R245-080Q32-18M | 32.0 | B | 98.8 | 50.0 | 5.0 | 1.72 | 6100 | 4 | R245-18T6.. | |
| 100.0 | 18 | 32 | 10.00 | 5 | R245-080Q32-18H | 32.0 | B | 98.8 | 50.0 | 5.0 | 1.60 | 6100 | 5 | R245-18T6.. | |
| | 12 | 32 | 6.00 | 5 | R245-100Q32-12L | 32.0 | B | 112.5 | 50.0 | 3.0 | 1.77 | 11300 | 5 | R245-12T3.. | |
| | 12 | 32 | 6.00 | 7 | R245-100Q32-12M | 32.0 | B | 112.5 | 50.0 | 3.0 | 1.81 | 11300 | 7 | R245-12T3.. | |
| | 12 | 32 | 6.00 | 10 | R245-100Q32-12H | 32.0 | B | 112.5 | 50.0 | 3.0 | 1.74 | 11300 | 10 | R245-12T3.. | |
| 125.0 | 18 | 32 | 10.00 | 4 | R245-100Q32-18M | 32.0 | B | 118.8 | 50.0 | 5.0 | 2.08 | 5400 | 4 | R245-18T6.. | |
| | 18 | 32 | 10.00 | 6 | R245-100Q32-18H | 32.0 | B | 118.8 | 50.0 | 5.0 | 1.92 | 5400 | 6 | R245-18T6.. | |
| | 12 | 40 | 6.00 | 6 | R245-125Q40-12L | 40.0 | B | 137.5 | 63.0 | 3.0 | 3.20 | 10100 | 6 | R245-12T3.. | |
| | 12 | 40 | 6.00 | 8 | R245-125Q40-12M | 40.0 | B | 137.5 | 63.0 | 3.0 | 3.12 | 10100 | 8 | R245-12T3.. | |
| | 12 | 40 | 6.00 | 12 | R245-125Q40-12H | 40.0 | B | 137.5 | 63.0 | 3.0 | 3.10 | 10100 | 12 | R245-12T3.. | |
| 160.0 | 18 | 40 | 10.00 | 5 | R245-125Q40-18M | 40.0 | B | 138.8 | 63.0 | 5.0 | 3.74 | 4900 | 5 | R245-18T6.. | |
| | 18 | 40 | 10.00 | 7 | R245-125Q40-18H | 40.0 | B | 138.8 | 63.0 | 5.0 | 3.64 | 4900 | 7 | R245-18T6.. | |
| | 12 | 40S | 6.00 | 7 | R245-160Q40-12L | 40.0 | C | 66.7 | 172.5 | 63.0 | 3.0 | 4.63 | 8900 | 7 | R245-12T3.. |
| | 12 | 40S | 6.00 | 10 | R245-160Q40-12M | 40.0 | C | 66.7 | 172.5 | 63.0 | 3.0 | 4.50 | 8900 | 10 | R245-12T3.. |
| | 12 | 40S | 6.00 | 16 | R245-160Q40-12H | 40.0 | C | 66.7 | 172.5 | 63.0 | 3.0 | 4.49 | 8900 | 16 | R245-12T3.. |
| 200.0 | 18 | 40S | 10.00 | 6 | R245-160Q40-18M | 40.0 | C | 66.7 | 178.8 | 63.0 | 5.0 | 5.11 | 4300 | 6 | R245-18T6.. |
| | 18 | 40S | 10.00 | 9 | R245-160Q40-18H | 40.0 | C | 66.7 | 178.8 | 63.0 | 5.0 | 4.99 | 4300 | 9 | R245-18T6.. |
| | 12 | 60 | 6.00 | 8 | R245-200Q60-12L | 60.0 | C | 101.6 | 212.5 | 63.0 | 3.0 | 6.43 | 7950 | 8 | R245-12T3.. |
| | 12 | 60 | 6.00 | 12 | R245-200Q60-12M | 60.0 | C | 101.6 | 212.5 | 63.0 | 3.0 | 10.64 | 7950 | 12 | R245-12T3.. |
| | 12 | 60 | 6.00 | 20 | R245-200Q60-12H | 60.0 | C | 101.6 | 212.5 | 63.0 | 3.0 | 10.35 | 7950 | 20 | R245-12T3.. |
| 250.0 | 18 | 60 | 10.00 | 8 | R245-200Q60-18M | 60.0 | C | 101.6 | 218.8 | 63.0 | 5.0 | 6.24 | 3800 | 8 | R245-18T6.. |
| | 18 | 60 | 10.00 | 12 | R245-200Q60-18H | 60.0 | C | 101.6 | 218.8 | 63.0 | 5.0 | 6.10 | 3800 | 12 | R245-18T6.. |
| | 12 | 60 | 6.00 | 10 | R245-250Q60-12L | 60.0 | C | 101.6 | 262.5 | 63.0 | 3.0 | 9.12 | 7100 | 10 | R245-12T3.. |
| | 12 | 60 | 6.00 | 14 | R245-250Q60-12M | 60.0 | C | 101.6 | 262.5 | 63.0 | 3.0 | 8.93 | 7100 | 14 | R245-12T3.. |
| | 12 | 60 | 6.00 | 24 | R245-250Q60-12H | 60.0 | C | 101.6 | 262.5 | 63.0 | 3.0 | 8.74 | 7100 | 24 | R245-12T3.. |
| 18 | 60 | 10.00 | 10 | R245-250Q60-18M | 60.0 | C | 101.6 | 268.8 | 63.0 | 5.0 | 17.22 | 3400 | 10 | R245-18T6.. | |
| | 18 | 60 | 10.00 | 14 | R245-250Q60-18H | 60.0 | C | 101.6 | 268.8 | 63.0 | 5.0 | 16.00 | 3400 | 14 | R245-18T6.. |

| Spare parts | | | | |
|---------------|--------------|-------------|-------------|-------------|
| DC | Insert screw | Shim | Shim screw | |
| 50.00-250.00 | 12 | 5513 020-01 | 5322 472-01 | 5512 090-09 |
| 80.00-100.00 | 18 | 5513 020-55 | | |
| 125.00-250.00 | 18 | 5513 020-26 | 5322 472-03 | 5512 090-10 |

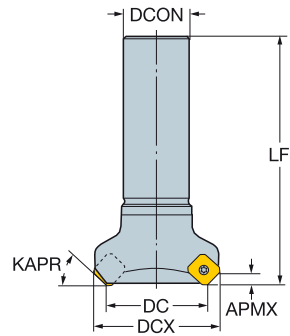
For complete list of spare parts, see www.sandvik.coromant.com



CoroMill® 245 face milling cutter

Cylindrical shank

KAPR 45°



| | | | | | | Dimensions, mm | | | | | | | |
|------|-------------------|---------------------|---------------|------|-----------------|----------------|------|-------|-----|------|-------|---|-------------|
| DC | CZC _{MS} | APMX _{FFW} | Ordering code | DCON | DCX | LF | NM | KG | RPM | CICT | MIID | | |
| 32.0 | 12 | 32 | 6.00 | 3 | R245-032A32-12M | 32.0 | 44.5 | 117.0 | 3.0 | 0.97 | 18250 | 3 | R245-12T3.. |
| 40.0 | 12 | 32 | 6.00 | 3 | R245-040A32-12L | 32.0 | 52.5 | 120.0 | 3.0 | 1.06 | 18250 | 3 | R245-12T3.. |
| 50.0 | 12 | 32 | 6.00 | 3 | R245-050A32-12L | 32.0 | 62.5 | 120.0 | 3.0 | 1.36 | 16250 | 3 | R245-12T3.. |
| | 12 | 32 | 6.00 | 4 | R245-050A32-12M | 32.0 | 62.5 | 120.0 | 3.0 | 1.33 | 16250 | 4 | R245-12T3.. |
| 63.0 | 12 | 32 | 6.00 | 4 | R245-063A32-12L | 32.0 | 75.5 | 120.0 | 3.0 | 1.48 | 14400 | 4 | R245-12T3.. |
| | 12 | 32 | 6.00 | 5 | R245-063A32-12M | 32.0 | 75.5 | 120.0 | 3.0 | 1.49 | 14400 | 5 | R245-12T3.. |
| 80.0 | 12 | 32 | 6.00 | 4 | R245-080A32-12L | 32.0 | 92.5 | 120.0 | 3.0 | 1.80 | 12700 | 4 | R245-12T3.. |
| | 12 | 32 | 6.00 | 6 | R245-080A32-12M | 32.0 | 92.5 | 120.0 | 3.0 | 1.74 | 12700 | 6 | R245-12T3.. |

| Spare parts | | | | |
|-------------|--------------|-------------|-------------|-------------|
| DC | Insert screw | Shim | Shim screw | |
| 32.00 | 12 | 5513 020-01 | | |
| 40.00-80.00 | 12 | 5513 020-01 | 5322 472-01 | 5512 090-09 |

For complete list of spare parts, see www.sandvik.coromant.com

I14



L4



N22



N6

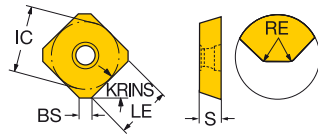
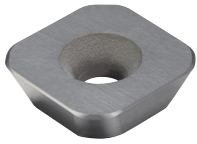


N9

CoroMill® 245 insert for milling

Advanced cutting materials

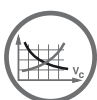
KRINS 45°



| | | | | K | | N | | H | | Dimensions, mm | | | |
|-------|----|------|---------------|------|-------|------|------|-------|------|----------------|------|-----|--|
| | | RE | | 6190 | CBS50 | CD10 | 6190 | CBS50 | IC | LE | S | BS | |
| Light | 12 | 1.50 | R245-12 T3 E | ☆ | ☆ | ★ | ☆ | ☆ | 13.4 | 3.5 | 3.97 | 1.4 | |
| | | 2.50 | R245-12 T3 E1 | ☆ | | | ☆ | | 13.4 | 10.0 | 3.97 | 0.4 | |



I12



I146



I168



N22



N10

