

CoroMill® 345

Face mill for high productivity

Application

- Face milling
- Roughing to finishing

ISO application area:



Benefits and features

- Low cost per component thanks to eight cutting edges
- High output – with internal coolant high productivity is possible also in demanding materials
- Secure machining thanks to shim-protected tip seats and tough cutter body
- Optimized machine utilization and productivity with four different pitches
- Wide application area – use the same concept for different application



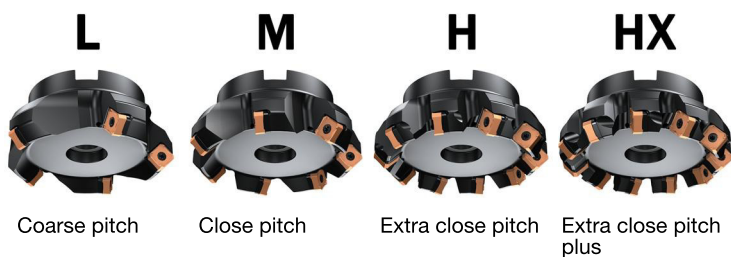
www.sandvik.coromant.com/coromill345

Couplings

- Coromant Capto®
- Arbor
- Cylindrical shank

Inserts

- Eight cutting edges
- Wiper inserts for excellent surface finish at high feed per tooth



Coarse pitch

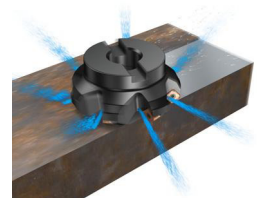
Close pitch

Extra close pitch

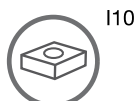
Extra close pitch plus

Internal coolant

Coolant supply to each insert pocket gives good chip evacuation and performance in demanding materials.



17

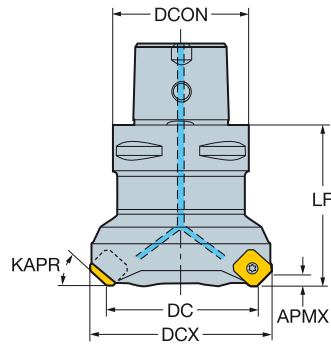


110

CoroMill® 345 face milling cutter

Coromant Capto® - Internal coolant supply

KAPR 45°



						Dimensions, mm								
DC	CZC _{MS}	APMX _{FFW}	CNSC	Ordering code		DCON	DCX	LF	NM	KG	RPMX	CICT	MIID	
40.0	13	C4	6.00	3	4	345-040C4-13M	40.0	54.1	60.0	3.0	0.89	19600	4	345R-13T5
50.0	13	C5	6.00	3	4	345-050C5-13M	50.0	64.1	60.0	3.0	1.39	17500	4	345R-13T5
	13	C6	6.00	3	4	345-050C6-13M	63.0	64.1	60.0	3.0	1.80	17500	4	345R-13T5
	13	C5	6.00	3	5	345-050C5-13H	50.0	64.1	60.0	3.0	1.48	17500	5	345R-13T5
	13	C6	6.00	3	5	345-050C6-13H	63.0	64.1	60.0	3.0	1.79	17500	5	345R-13T5
63.0	13	C5	6.00	3	5	345-063C5-13M	50.0	77.1	60.0	3.0	1.53	15500	5	345R-13T5
	13	C6	6.00	3	5	345-063C6-13M	63.0	77.1	60.0	3.0	1.91	15500	5	345R-13T5
	13	C5	6.00	3	6	345-063C5-13H	50.0	77.1	60.0	3.0	1.62	15500	6	345R-13T5
	13	C6	6.00	3	6	345-063C6-13H	63.0	77.1	60.0	3.0	1.97	15500	6	345R-13T5
80.0	13	C6	6.00	3	6	345-080C6-13M	63.0	94.1	70.0	3.0	2.46	13700	6	345R-13T5
	13	C8	6.00	3	6	345-080C8-13M	80.0	94.1	70.0	3.0	3.32	13700	6	345R-13T5
	13	C6	6.00	3	8	345-080C6-13H	63.0	94.1	70.0	3.0	2.54	13700	8	345R-13T5
	13	C8	6.00	3	8	345-080C8-13H	80.0	94.1	70.0	3.0	3.35	13700	8	345R-13T5
100.0	13	C8	6.00	3	7	345-100C8-13M	80.0	114.1	80.0	3.0	4.01	12200	7	345R-13T5
	13	C8	6.00	3	10	345-100C8-13H	80.0	114.1	80.0	3.0	4.08	12200	10	345R-13T5

Spare parts

Insert screw	Shim	Shim screw
416.1-834	5322 474-01	5512 090-11

For complete list of spare parts, see www.sandvik.coromant.com



I10



L4



N22



N9



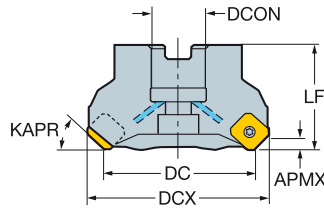
N15

CoroMill® 345 face milling cutter

Arbor - Internal coolant supply

STDNO
KAPR

ISO 6462:2011
45°



						Dimensions, mm											
DC	CZC _{MIS}	APMX _{FW}	CNSC	Ordering code	DCON	ISO	DBC	DCX	LF	NM	KG	RPMX	CICT	MID			
40.0	13	22	6.00	1	3	345-040Q22-13L	22.0	A	54.1	45.0	3.0	0.68	19600	3	345R-13T5		
	13	22	6.00	1	4	345-040Q22-13M	22.0	A	54.1	45.0	3.0	0.67	19600	4	345R-13T5		
50.0	13	22	6.00	1	3	345-050Q22-13L	22.0	A	64.1	45.0	3.0	0.82	17500	3	345R-13T5		
	13	22	6.00	1	4	345-050Q22-13M	22.0	A	64.1	45.0	3.0	0.78	17500	4	345R-13T5		
63.0	13	22	6.00	1	5	345-050Q22-13H	22.0	A	64.1	45.0	3.0	0.82	17500	5	345R-13T5		
	13	22	6.00	1	4	345-063Q22-13L	22.0	A	77.1	45.0	3.0	0.98	15500	4	345R-13T5		
80.0	13	22	6.00	1	5	345-063Q22-13M	22.0	A	77.1	45.0	3.0	0.94	15500	5	345R-13T5		
	13	22	6.00	1	6	345-063Q22-13H	22.0	A	77.1	45.0	3.0	0.60	15500	6	345R-13T5		
100.0	13	22	6.00	1	7	345-063Q22-13HX	22.0	A	77.1	45.0	3.0	1.03	15500	7	345R-13T5		
	13	27	6.00	1	4	345-080Q27-13L	27.0	A	94.1	50.0	3.0	1.65	13700	4	345R-13T5		
125.0	13	27	6.00	1	6	345-080Q27-13M	27.0	A	94.1	50.0	3.0	1.72	13700	6	345R-13T5		
	13	27	6.00	1	8	345-080Q27-13H	27.0	A	94.1	50.0	3.0	1.72	13700	8	345R-13T5		
160.0	13	27	6.00	1	9	345-080Q27-13HX	27.0	A	94.1	50.0	3.0	1.76	13700	9	345R-13T5		
	13	32	6.00	1	5	345-100Q32-13L	32.0	A	114.1	50.0	3.0	2.30	12200	5	345R-13T5		
200.0	13	32	6.00	1	7	345-100Q32-13M	32.0	A	114.1	50.0	3.0	2.29	12200	7	345R-13T5		
	13	32	6.00	1	10	345-100Q32-13H	32.0	A	114.1	50.0	3.0	2.31	12200	10	345R-13T5		
250.0	13	32	6.00	1	11	345-100Q32-13HX	32.0	A	114.1	50.0	3.0	2.38	12200	11	345R-13T5		
	13	40	6.00	1	6	345-125Q40-13L	40.0	B	139.1	63.0	3.0	3.64	10900	6	345R-13T5		
125.0	13	40	6.00	1	8	345-125Q40-13M	40.0	B	139.1	63.0	3.0	3.48	10900	8	345R-13T5		
	13	40	6.00	1	12	345-125Q40-13H	40.0	B	139.1	63.0	3.0	3.63	10900	12	345R-13T5		
160.0	13	40	6.00	1	14	345-125Q40-13HX	40.0	B	139.1	63.0	3.0	3.64	10900	14	345R-13T5		
	13	40S	6.00	0	7	345-160Q40-13L	40.0	C	66.7	174.1	63.0	3.0	4.59	9600	7	345R-13T5	
200.0	13	40S	6.00	0	10	345-160Q40-13M	40.0	C	66.7	174.1	63.0	3.0	4.50	9600	10	345R-13T5	
	13	40S	6.00	0	12	345-160Q40-13H	40.0	C	66.7	174.1	63.0	3.0	4.72	9600	12	345R-13T5	
250.0	13	40S	6.00	0	16	345-160Q40-13HX	40.0	C	66.7	174.1	63.0	3.0	4.58	9600	16	345R-13T5	
	13	60	6.00	0	12	345-200Q60-13M	60.0	C	101.6	214.1	63.0	3.0	10.60	8600	12	345R-13T5	
100.0	13	60	6.00	0	16	345-200Q60-13H	60.0	C	101.6	214.1	63.0	3.0	6.64	8600	16	345R-13T5	
	13	60	6.00	0	20	345-200Q60-13HX	60.0	C	101.6	214.1	63.0	3.0	6.50	8600	20	345R-13T5	
125.0	13	60	6.00	0	14	345-250Q60-13M	60.0	C	101.6	264.1	63.0	3.0	10.36	7700	14	345R-13T5	
	13	60	6.00	0	18	345-250Q60-13H	60.0	C	101.6	264.1	63.0	3.0	10.79	7700	18	345R-13T5	
250.0	13	60	6.00	0	24	345-250Q60-13HX	60.0	C	101.6	264.1	63.0	3.0	10.58	7700	24	345R-13T5	

Spare parts				
DC	Shower screw	Insert screw	Shim	Shim screw
40.00-63.00	5512-073-01	416.1-834	5322 474-01	5512 090-11
80.00	5512-073-02	416.1-834	5322 474-01	5512 090-11
100.00	5512-073-05	416.1-834	5322 474-01	5512 090-11
125.00-160.00	5512-098-03	416.1-834	5322 474-01	5512 090-11
250.00		416.1-834	5322 474-01	5512 090-11

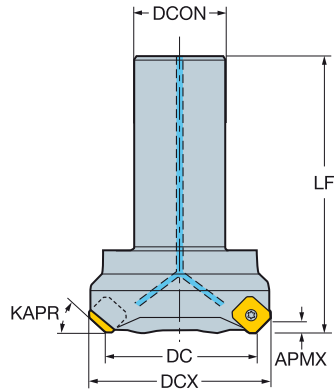
For complete list of spare parts, see www.sandvik.coromant.com



CoroMill® 345 face milling cutter

Cylindrical shank - Internal coolant supply

KAPR 45°



						Dimensions, mm							
DC	CZC _{MS}	APMX _{FFW}	CNSC	Ordering code	DCON	DCX	LF	NM	KG	RPM	CICT	MIID	
40.0	13	32	6.00	1 3	345-040A32-13L	32.0	54.1	120.0	3.0	1.26	19600	3	345R-13T5
	13	32	6.00	1 4	345-040A32-13M	32.0	54.1	120.0	3.0	1.26	19600	4	345R-13T5
50.0	13	32	6.00	1 3	345-050A32-13L	32.0	64.1	120.0	3.0	1.41	17500	3	345R-13T5
	13	32	6.00	1 4	345-050A32-13M	32.0	64.1	120.0	3.0	1.41	17500	4	345R-13T5

Spare parts

Insert screw	Shim	Shim screw
416.1-834	5322 474-01	5512 090-11

For complete list of spare parts, see www.sandvik.coromant.com



110



L4



N22



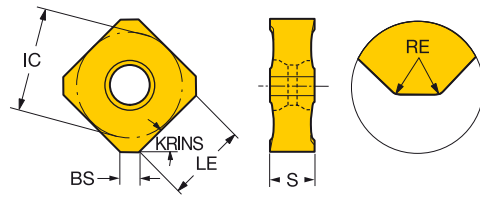
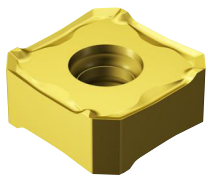
N9



N15

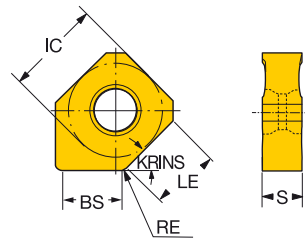
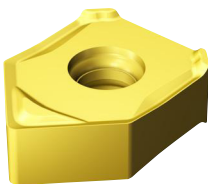
CoroMill® 345 insert for milling

KRINS 45°



		RE	Ordering code	P								M				K					N		S				H				Dimensions, mm									
				1010	1080	4220	4230	4240	530	S40T	1040	2030	2040	530	S30T	S40T	1010	1020	3040	3220	3330	4220	H13A	K20W	1080	530	2080	2040	S30T	S40T	1010	1030	3040	4220	530	IC	LE	S	BS	
Light	KL	0.80	345R-1305E-KL												★	☆	☆	☆	☆	☆	☆	☆													13.0	8.8	5.60	2.0		
		0.80	345R-1305M-KL			☆										★	☆	☆	☆	☆	☆	☆	☆												13.0	8.8	5.60	2.0		
	ML	0.80	345R-13T5E-ML		☆																															13.0	8.8	5.95	2.0	
PL	0.80	345R-1305E-PL		☆	☆		★	☆	☆						☆															★	☆		☆			13.0	8.8	5.60	2.0	
	0.80	345R-1305M-PL		☆	☆	☆	★	☆							☆															★	☆		☆			13.0	8.8	5.60	2.0	
Medium	KM	0.80	345R-1305E-KM	☆											☆	☆	☆	★																		13.0	8.8	5.60	2.0	
		0.80	345R-1305M-KM													☆	☆	☆	★																	13.0	8.8	5.60	2.0	
	MM	0.80	345R-13T5E-MM		☆											☆	★	☆	☆	☆	☆	☆	☆													13.0	8.8	5.95	2.0	
		0.80	345R-13T5M-MM		☆											☆	★	☆	☆	☆	☆	☆	☆													13.0	8.8	5.95	2.0	
PM	0.80	345L-1305M-PM		☆	☆		★	☆							☆																						13.0	8.8	5.60	2.0
	0.80	345R-1305M-PM		☆	☆	☆	★	☆	☆						☆																						13.0	8.8	5.60	2.0
Heavy	KH	0.80	345R-1305M-KH		☆	☆	☆	★	☆						☆																						13.0	8.8	5.60	2.0
		0.80	345R-1305M-KH		☆	☆	☆	★	☆							☆																					13.0	8.8	5.60	2.0
PH	0.80	345R-1305M-PH		☆	☆	☆	★	☆							☆	★																					13.0	8.8	5.60	2.0
		345R-1305M-PH		☆	☆	☆	★	☆								☆	★																				13.0	8.8	5.60	2.0

KRINS 45°



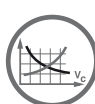
Wiper TECHNOLOGY

		RE	Ordering code	P				M				K					N			S				H			Dimensions, mm																
				1010	1030	4230	530	1040	2030	2040	530	S30T	S40T	1010	1020	3220	3330	4230	H13A	K20W	1030	530	H13A	2030	2040	H13A	S30T	S40T	1010	1030	530	IC	LE	S	BS	BSR							
Light	KW8	1.00	345N-1305E-KW8																																			13.0	8.8	5.60	8.0	500.0	
		1.00	345N-13T5E-MW8		☆			☆	☆	☆																													13.0	8.8	5.95	8.0	500.0
	PW8	1.00	345N-1305E-PW5		☆	☆	☆									☆																							13.0	8.8	5.60	5.0	500.0
		1.00	345N-1305E-PW8		☆	☆	☆	☆								☆																							13.0	8.8	5.60	8.0	500.0

T5 Wiper insert should be used with T5 standard insert



I7



I146



I168



N22



N10



N2