

# CoroMill® 425

Easily adjustable finish face milling

## Application

- Finish face milling in cast iron
- Main components: Engine blocks and cylinder heads
- Other components: Axle housings, brake carriers, crank cases

## ISO application area:

**K**

## Benefits and features

- Easy to use
- Eight cutting edges
- Accurate and reliable adjustment system



[www.sandvik.coromant.com/coromill425](http://www.sandvik.coromant.com/coromill425)

## Couplings

- Arbor
- Cap mounting

## Inserts

- Eight cutting edges

## Adjustable wiper inserts

CoroMill® 425 is designed to allow for easily adjustable wiper inserts. You can adjust the wiper insert up and down without loosening the cartridge clamping screw.

Thanks to the design, the adjustment system is very stable and accurate.



I31

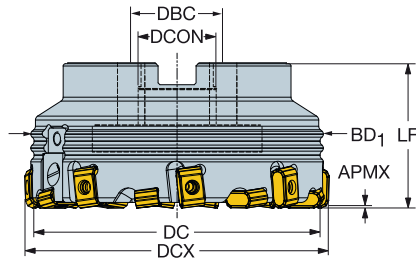


I32

# CoroMill® 425 face milling cutter

Arbor

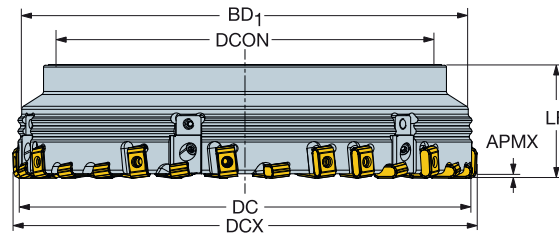
STDNO ISO 6462:2011  
KAPR 25°



							Dimensions, mm										
DC	CZC <sub>MS</sub>	APMX	ZADJ	Ordering code	DCON	ISO	DBC	DCX	BD <sub>1</sub>	LF	NM	KG	RPMX	CICT	MIID		
100.0	17	32	0.9	2	12	425-100Q32-17H	32.0	A	107.0	101.9	63.0	3.0	2.23	4770	12	425N-1707	
125.0	17	40	0.9	2	16	425-125Q40-17H	40.0	B	132.0	126.6	63.0	3.0	3.45	3820	16	425N-1707	
160.0	17	40S	0.9	3	18	425-160Q40-17H	40.0	C	66.7	167.0	161.3	63.0	3.0	5.10	2980	18	425N-1707
200.0	17	60	0.9	3	24	425-200Q60-17H	60.0	C	101.6	207.0	201.1	63.0	3.0	7.69	2390	24	425N-1707
250.0	17	60	0.9	6	30	425-250Q60-17H	60.0	C	101.6	257.0	251.1	63.0	3.0	12.99	1910	30	425N-1707

## Cap coupling

KAPR 25°



							Dimensions, mm									
DC	CZC <sub>MS</sub>	APMX	ZADJ	Ordering code	DCON	DCX	BD <sub>1</sub>	LF	NM	KG	RPMX	CICT	MIID			
250.0	17	250	0.9	6	30	425-250P-17H	203.7	257.0	251.1	63.0	3.0	9.62	1910	30	425N-1707	
	17	250	0.9	6	30	L425-250P-17H	203.7	257.0	251.1	63.0	3.0	9.62	1910	30	425N-1707	
315.0	17	315	0.9	6	36	425-315P-17H	268.7	322.0	316.1	63.0	3.0	13.60	1520	36	425N-1707	
	17	315	0.9	6	36	L425-315P-17H	268.7	322.0	316.1	63.0	3.0	13.60	1520	36	425N-1707	
355.0	17	355	0.9	6	48	425-355P-17H	308.7	362.0	356.1	63.0	3.0	16.45	1340	48	425N-1707	
	17	355	0.9	6	48	L425-355P-17H	308.7	362.0	356.1	63.0	3.0	16.45	1340	48	425N-1707	
400.0	17	400	0.9	9	54	425-400P-17H	353.7	407.0	401.1	63.0	3.0	20.09	1190	54	425N-1707	
	17	400	0.9	9	54	L425-400P-17H	353.7	407.0	401.1	63.0	3.0	20.09	1190	54	425N-1707	
500.0	17	500	0.9	9	54	425-500P-17M	453.7	507.0	501.1	63.0	3.0	30.92	950	54	425N-1707	
	17	500	0.9	9	54	L425-500P-17M	453.7	507.0	501.1	63.0	3.0	30.92	950	54	425N-1707	

### Spare parts

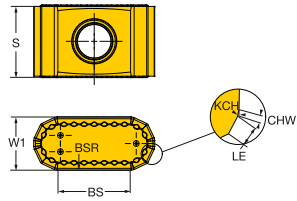
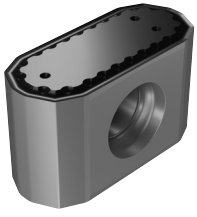
Clamping screw	Wedge	Screw	Screw	Insert screw	Cassette
3212 012-260	5332 010-09	5516 035-09	5513 014-75	5513 020-13	R425-CA-17-2

For complete list of spare parts, see [www.sandvik.coromant.com](http://www.sandvik.coromant.com)



# CoroMill® 425 insert for milling

KRINS 25°



						K		Dimensions, mm								
				Ordering code		1010	1020	3220	3330	K20W	W1	LE	S	BS	BSR	
Light	KLW	17	14°	0.4	425N-1707E-KLW12	★	☆	☆	☆	☆	7.5	2.1	10.00	10.4	1250.0	



I31



I146



I168



N22



N10