

CoroMill® 200

Robust face milling and profile cutter

Application

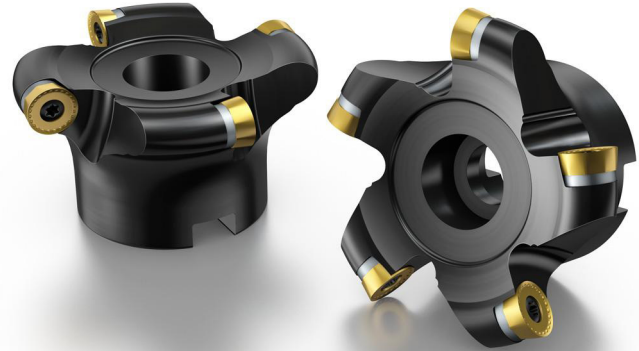
- Full slot milling
- Face milling
- Ramping
- Profiling
- Pocket milling

ISO application area:



Benefits and features

- Process security and reliability
- High metal removal rate
- Tailor Made options available
- Shim protection available



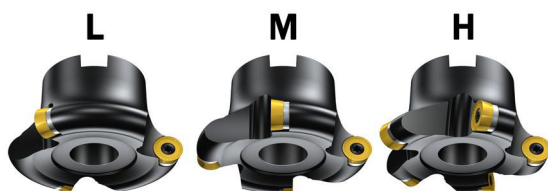
www.sandvik.coromant.com/coromill200

Couplings

- Arbor
- Cylindrical shank

Inserts

- 8 cutting edges
- Insert geometries and grades for all materials
- Insert geometries for high chip removal rates – large AP and f_z



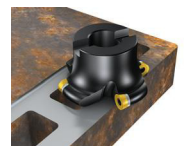
Coarse pitch

Close pitch

Extra close pitch

Reliability and process security

Strong cutting edges make the cutter resistant to tough conditions with interruptions (holes, gaps etc.) and/or abrasive scale (skin).



192



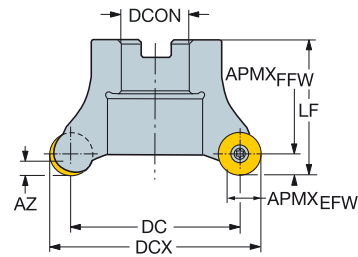
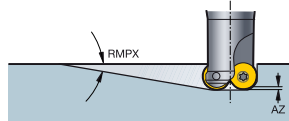
194

CoroMill® 200 face milling cutter

Arbor

STDNO

ISO 6462:2011



										Dimensions, mm									
DC	CZC _{MS}	APMX _{EFW}	APMX _{FFW}	RMPX	AZ		Ordering code	DCON	ISO	DBC	DCX	BD ₁	LF	NM	KG	RPMX	CICT	MIID	
38.0	12	22	9.0	6.00	6.50°	3.7	3	R200-038Q22-12L	22.0	A		50.0	50.0	50.0	3.0	0.65	18800	3	RCKT 12 04 M0
	12	22	9.0	6.00	6.50°	3.7	4	R200-038Q22-12M	22.0	A		50.0	50.0	50.0	3.0	0.66	18800	4	RCKT 12 04 M0
	12	22	9.0	6.00	6.50°	3.7	5	R200-038Q22-12H	22.0	A		50.0	50.0	50.0	3.0	0.78	18800	5	RCKT 12 04 M0
40.0	12	22	9.0	6.00	6.30°	3.7	3	R200-040Q22-12L	22.0	A		52.0	52.0	50.0	3.0	0.70	18000	3	RCKT 12 04 M0
	12	22	9.0	6.00	6.30°	3.7	4	R200-040Q22-12M	22.0	A		52.0	52.0	50.0	3.0	0.68	18000	4	RCKT 12 04 M0
	12	22	9.0	6.00	6.30°	3.7	5	R200-040Q22-12H	22.0	A		52.0	52.0	50.0	3.0	0.66	18000	5	RCKT 12 04 M0
47.0	16	22	12.0	8.00	7.00°	4.9	4	R200-047Q22-16M	22.0	A		63.0	63.0	50.0	5.0	0.80	15300	4	RCKT 16 06 M0
50.0	16	27	12.0	8.00	6.80°	4.9	4	R200-050Q27-16M	27.0	A		66.0	66.0	50.0	5.0	0.86	14500	4	RCKT 16 06 M0
	16	27	12.0	8.00	6.80°	4.9	5	R200-050Q27-16H	27.0	A		66.0	66.0	50.0	5.0	0.75	14500	5	RCKT 16 06 M0
51.0	12	22	9.0	6.00	4.50°	3.7	3	R200-051Q22-12L	22.0	A		63.0	63.0	50.0	3.0	0.81	16200	3	RCKT 12 04 M0
	12	22	9.0	6.00	4.50°	3.7	4	R200-051Q22-12M	22.0	A		63.0	63.0	50.0	3.0	0.74	16200	4	RCKT 12 04 M0
	12	22	9.0	6.00	4.50°	3.7	5	R200-051Q22-12H	22.0	A		63.0	63.0	50.0	3.0	0.82	16200	5	RCKT 12 04 M0
60.0	20	27	15.0	10.00	7.00°	6.1	3	R200-060Q27-20L	27.0	A		80.0	80.0	50.0	7.5	1.00	10600	3	RCKT 20 06 M0
	20	27	15.0	10.00	7.00°	6.1	4	R200-060Q27-20M	27.0	A		80.0	80.0	50.0	7.5	0.89	10600	4	RCKT 20 06 M0
64.0	16	27	12.0	8.00	5.00°	4.9	4	R200-064Q27-16L	27.0	A		80.0	80.0	50.0	5.0	1.16	13100	4	RCKT 16 06 M0
	16	27	12.0	8.00	5.00°	4.9	5	R200-064Q27-16M	27.0	A		80.0	80.0	50.0	5.0	1.02	13100	5	RCKT 16 06 M0
	16	27	12.0	8.00	5.00°	4.9	6	R200-064Q27-16H	27.0	A		80.0	80.0	50.0	5.0	0.96	13100	6	RCKT 16 06 M0
68.0	12	27	9.0	6.00	3.50°	3.7	4	R200-068Q27-12L	27.0	A		80.0	80.0	50.0	3.0	1.05	14000	4	RCKT 12 04 M0
	12	27	9.0	6.00	3.50°	3.7	6	R200-068Q27-12M	27.0	A		80.0	80.0	50.0	3.0	0.92	14000	6	RCKT 12 04 M0
80.0	20	32	15.0	10.00	5.00°	6.1	4	R200-080Q32-20L	32.0	B		100.0	100.0	63.0	7.5	1.73	9200	4	RCKT 20 06 M0
	20	32	15.0	10.00	5.00°	6.1	6	R200-080Q32-20M	32.0	B		100.0	100.0	63.0	7.5	1.54	9200	6	RCKT 20 06 M0
84.0	16	32	12.0	8.00	3.60°	4.9	4	R200-084Q32-16L	32.0	B		100.0	100.0	50.0	5.0	1.64	11400	4	RCKT 16 06 M0
	16	32	12.0	8.00	3.60°	4.9	6	R200-084Q32-16M	32.0	B		100.0	100.0	50.0	5.0	1.62	11400	6	RCKT 16 06 M0
88.0	12	32	9.0	6.00	2.50°	3.7	4	R200-088Q32-12L	32.0	B		100.0	100.0	50.0	3.0	1.66	12300	4	RCKT 12 04 M0
	12	32	9.0	6.00	2.50°	3.7	6	R200-088Q32-12M	32.0	B		100.0	100.0	50.0	3.0	1.50	12300	6	RCKT 12 04 M0
105.0	20	32	15.0	10.00	3.50°	6.1	5	R200-105Q32-20L	32.0	B		125.0	125.0	63.0	7.5	2.44	8000	5	RCKT 20 06 M0
	20	32	15.0	10.00	3.50°	6.1	6	R200-105Q32-20M	32.0	B		125.0	125.0	63.0	7.5	2.28	8000	6	RCKT 20 06 M0
109.0	16	32	12.0	8.00	2.50°	4.9	5	R200-109Q32-16L	32.0	B		125.0	125.0	50.0	5.0	2.26	10000	5	RCKT 16 06 M0
	16	32	12.0	8.00	2.50°	4.9	6	R200-109Q32-16M	32.0	B		125.0	125.0	50.0	5.0	2.33	10000	6	RCKT 16 06 M0
140.0	20	40S	15.0	10.00	2.50°	6.1	6	R200-140Q40-20L	40.0	C	66.7	160.0	160.0	63.0	7.5	3.72	6900	6	RCKT 20 06 M0
	20	40S	15.0	10.00	2.50°	6.1	8	R200-140Q40-20M	40.0	C	66.7	160.0	160.0	63.0	7.5	3.60	6900	8	RCKT 20 06 M0

For spare parts, visit www.sandvik.coromant.com



I94



L4



M2



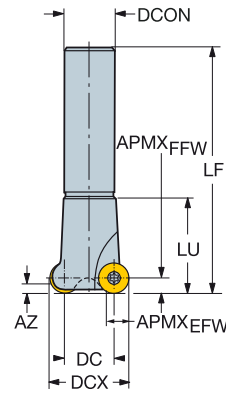
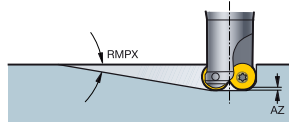
N22



N9

CoroMill® 200 face milling cutter

Cylindrical shank



									Dimensions, mm									
DC	CZC _{MS}	APMX _{EFW}	APMX _{FFW}	RMPX	AZ	Insert		Ordering code	DCON	DCX	BD ₁	LF	NM	KG	RPMX	CICT	MIID	
15.0	10	20	7.5	5.00	13.00°	2.9	2	R200-015A20-10M	20.0	25.0	25.0	150.0	3.0	0.54	37500	2	RCKT 10 T3 M0	
	10	20	7.5	5.00	13.00°	2.9	3	R200-015A20-10H	20.0	25.0	25.0	150.0	3.0	0.49	37500	3	RCKT 10 T3 M0	
20.0	12	25	9.0	6.00	13.00°	3.7	2	R200-020A25-12M	25.0	32.0	32.0	190.0	3.0	0.84	31100	2	RCKT 12 04 M0	
	12	25	9.0	6.00	13.00°	3.7	3	R200-020A25-12H	25.0	32.0	32.0	190.0	3.0	0.86	31100	3	RCKT 12 04 M0	
24.0	16	32	12.0	8.00	13.00°	4.9	2	R200-024A32-16L	32.0	40.0	40.0	240.0	5.0	1.72	21800	2	RCKT 16 06 M0	
	16	32	12.0	8.00	13.00°	4.9	3	R200-024A32-16M	32.0	40.0	40.0	240.0	5.0	1.64	21800	3	RCKT 16 06 M0	
28.0	12	32	9.0	6.00	9.50°	3.7	2	R200-028A32-12L	32.0	40.0	40.0	240.0	3.0	1.76	26300	2	RCKT 12 04 M0	
	12	32	9.0	6.00	9.50°	3.7	3	R200-028A32-12M	32.0	40.0	40.0	240.0	3.0	1.74	26300	3	RCKT 12 04 M0	
30.0	20	32	15.0	10.00	13.00°	6.1	2	R200-030A32-20L	32.0	50.0	50.0	240.0	7.5	1.88	20900	2	RCKT 20 06 M0	
	20	32	15.0	10.00	13.00°	6.1	3	R200-030A32-20M	32.0	50.0	50.0	240.0	7.5	1.79	20900	3	RCKT 20 06 M0	
34.0	16	32	12.0	8.00	11.00°	4.9	3	R200-034A32-16M	32.0	50.0	50.0	240.0	5.0	1.81	18300	3	RCKT 16 06 M0	
	38.0	12	32	9.0	6.00	6.50°	3	R200-038A32-12L	32.0	50.0	50.0	240.0	3.0	1.86	22500	3	RCKT 12 04 M0	
12	32	9.0	6.00	6.50°	3.7	4	R200-038A32-12M	32.0	50.0	50.0	240.0	3.0	1.84	22500	4	RCKT 12 04 M0		

Spare parts	
	Insert screw
10	5513 020-09
12	5513 020-09
16	5513 020-07
20	5513 020-08

For complete list of spare parts, see www.sandvik.coromant.com



194



L4



N22



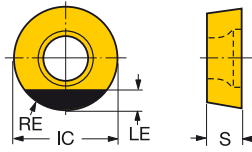
N9

CoroMill® 200 insert for milling

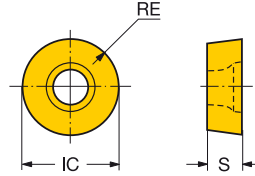
Advanced cutting materials



RCHT



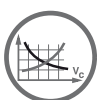
RCKT



				K			H			Dimensions, mm		
				6190	CBS50	6190	CBS50	IC	LE	S		
Light	PO	12	6.00	RCHT 12 04 MO	☆	☆	☆	☆	12.0	3.0	4.76	
Medium	SK15	12	6.00	RCKT 12 04 MO	☆	☆	☆	☆	12.0		4.76	
		16	8.00	RCKT 16 06 MO	☆	☆	☆	☆	16.0		6.35	



192



I146



I168



N22



N10

