

CoroMill® 490

Face and shoulder mill for precise profiles

Application

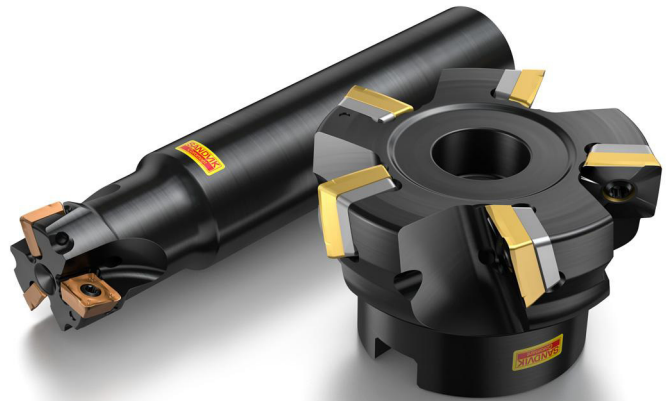
- Square shoulder milling
- Repeated shoulder milling
- Circular interpolation
- Face milling

ISO application area:



Benefits and features

- Great flexibility, high precision and good tolerances
- Light and quiet cutting with low cutting forces
- High productivity with outstanding insert geometry and grades
- Sharp edge lines and burr-free, smooth profiles
- Component feature finished in one pass
- True 90-degree cut without sharp steps
- Light cutting performance provides an optimal utilization of low-powered machine tools. This also facilitates use of the cutter on extended tool assemblies
- Undersized shanks for larger diameter cutters, using 8 mm inserts, enable these cutters to fit into smaller tool holders
- Oversized versions enhance the accessibility and provide natural clearance to tight fixtures



www.sandvik.coromant.com/coromill490

Couplings

- Coromant Capto®
- Arbor
- Cylindrical shank
- Weldon
- Coromant EH
- HSK
- Undersized shanks for cylindrical cutters
- Oversized versions available on arbor, Coromant Capto® cutters, arbor and Coromant EH

Inserts

- Four cutting edges
- Cemented carbide, CBN and ceramic grades

L

M

H



Coarse pitch



Close pitch



Extra close pitch

Precision

The insert edges are slightly crowned to compensate for deflection. Due to this geometry, angular distortion during shoulder milling is minimized, and discernable steps between repeatable passes are avoided.



I39



I46

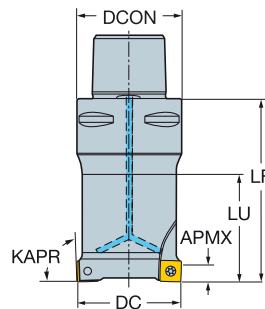


N6

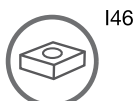
CoroMill® 490 square shoulder milling cutter

Coromant Capto® - Internal coolant supply

KAPR 90°



						Dimensions, mm							
DC	CZC _{MS}	APMX _{FFW}	CNSC	Ordering code	DCON	LF	LU	ⓀG	RPM	CICT	MID		
20.0	08	C3	5.50	3	2	490-020C3-08L	32.0	80.0	40.0	0.37	48500	2	490R-08T308
	08	C4	5.50	3	2	490-020C4-08L	40.0	70.0	40.0	0.62	39000	2	490R-08T308
25.0	08	C3	5.50	3	3	490-025C3-08M	32.0	80.0	60.0	0.39	40400	3	490R-08T308
	08	C4	5.50	3	3	490-025C4-08M	40.0	70.0	45.0	0.66	39000	3	490R-08T308
	08	C5	5.50	3	3	490-025C5-08M	50.0	75.0	50.0	0.85	28000	3	490R-08T308
32.0	08	C6	5.50	3	3	490-025C6-08M	63.0	80.0	53.0	1.41	20000	3	490R-08T308
	08	C3	5.50	3	4	490-032C3-08M	32.0	80.0	60.0	0.50	33900	4	490R-08T308
	08	C4	5.50	3	4	490-032C4-08M	40.0	70.0	45.0	0.75	33900	4	490R-08T308
	08	C5	5.50	3	4	490-032C5-08M	50.0	75.0	50.0	0.90	28000	4	490R-08T308
36.0	08	C6	5.50	3	4	490-032C6-08M	63.0	80.0	53.0	1.44	20000	4	490R-08T308
	08	C3	5.50	3	4	490-036C3-08M	32.0	50.0	30.0	0.55	31300	4	490R-08T308
	08	C4	5.50	3	4	490-040C4-08M	40.0	70.0	45.0	0.82	29300	4	490R-08T308
	08	C5	5.50	3	4	490-040C5-08M	50.0	75.0	50.0	1.09	28000	4	490R-08T308
40.0	08	C6	5.50	3	4	490-040C6-08M	63.0	80.0	53.0	1.62	20000	6	490R-08T308
	08	C4	5.50	3	6	490-040C4-08H	40.0	70.0	45.0	0.88	29300	6	490R-08T308
	08	C5	5.50	3	6	490-040C5-08H	50.0	75.0	50.0	1.10	28000	6	490R-08T308
	08	C6	5.50	3	6	490-040C6-08H	63.0	80.0	53.0	1.62	20000	6	490R-08T308
	14	C4	10.00	3	3	490-040C4-14M	40.0	70.0	45.0	0.82	26400	3	490R-1404
	14	C5	10.00	3	3	490-040C5-14M	50.0	75.0	50.0	1.02	26400	3	490R-1404
44.0	14	C6	10.00	3	3	490-040C6-14M	63.0	80.0	53.0	1.56	20000	3	490R-1404
	14	C4	10.00	3	4	490-040C4-14H	40.0	70.0	45.0	0.82	26400	4	490R-1404
	14	C5	10.00	3	4	490-040C5-14H	50.0	75.0	50.0	1.03	26400	4	490R-1404
	14	C6	10.00	3	4	490-040C6-14H	63.0	80.0	53.0	1.52	20000	4	490R-1404
	08	C4	5.50	3	5	490-044C4-08M	40.0	60.0	0.83	27600	5	490R-08T308	
	08	C6	5.50	3	6	490-044C6-08M	63.0	80.0	53.0	1.84	20000	5	490R-08T308
50.0	08	C4	5.50	3	6	490-044C4-08H	40.0	60.0	0.79	27600	6	490R-08T308	
	14	C4	10.00	3	3	490-044C4-14M	40.0	70.0	0.89	24600	3	490R-1404	
	14	C6	10.00	3	4	490-044C6-14M	63.0	80.0	53.0	1.86	20000	4	490R-1404
	08	C5	5.50	3	5	490-050C5-08M	50.0	75.0	50.0	1.28	25500	5	490R-08T308
	08	C6	5.50	3	5	490-050C6-08M	63.0	80.0	53.0	1.84	20000	5	490R-08T308
	08	C5	5.50	3	7	490-050C5-08H	50.0	75.0	50.0	1.26	25500	7	490R-08T308
54.0	08	C6	5.50	3	7	490-050C6-08H	63.0	80.0	53.0	1.86	20000	7	490R-08T308
	14	C5	10.00	3	4	490-050C5-14M	50.0	75.0	50.0	1.26	13700	4	490R-1404
	14	C6	10.00	3	4	490-050C6-14M	63.0	80.0	53.0	1.80	13700	4	490R-1404
	14	C5	10.00	3	5	490-050C5-14H	50.0	75.0	50.0	1.23	22400	5	490R-1404
	14	C6	10.00	3	5	490-050C6-14H	63.0	80.0	53.0	1.75	20000	5	490R-1404
	08	C5	5.50	3	5	490-054C5-08M	50.0	60.0	1.34	24300	5	490R-08T308	
63.0	08	C5	5.50	3	7	490-054C5-08H	50.0	60.0	1.34	24300	7	490R-08T308	
	14	C5	10.00	3	4	490-054C5-14M	50.0	60.0	1.31	13000	4	490R-1404	
	14	C6	10.00	3	5	490-054C6-14M	63.0	80.0	53.0	1.26	21300	5	490R-1404
	08	C6	5.50	3	6	490-063C6-08M	63.0	50.0	23.0	1.69	20000	6	490R-08T308
66.0	08	C6	5.50	3	8	490-063C6-08H	63.0	50.0	23.0	1.67	20000	8	490R-08T308
	14	C6	10.00	3	5	490-063C6-14M	63.0	80.0	53.0	2.18	11700	5	490R-1404
	14	C6	10.00	3	6	490-063C6-14H	63.0	80.0	53.0	2.16	11700	6	490R-1404
66.0	08	C6	5.50	3	6	490-066C6-08M	63.0	50.0	1.70	20000	6	490R-08T308	
	08	C6	5.50	3	8	490-066C6-08H	63.0	50.0	1.72	20000	8	490R-08T308	
	14	C6	10.00	3	5	490-066C6-14M	63.0	65.0	1.93	11400	5	490R-1404	
14	C6	10.00	3	6	490-066C6-14H	63.0	65.0	1.94	11400	6	490R-1404		



146



L4



N22



N6



N9

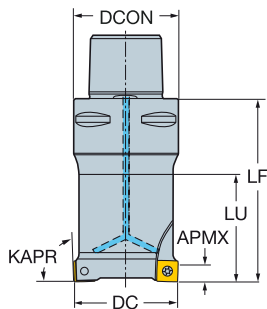


N15

CoroMill® 490 square shoulder milling cutter

Coromant Capto® - Internal coolant supply

KAPR 90°



						Dimensions, mm							
DC	CZC _{MS}	APMX _{FFW}	CNSC	Ordering code	DCON	LF	LU	ⓀG	RPMX	CICT	MIID		
80.0	08	C8	5.50	3	8	490-080C8-08M	80.0	80.0	45.0	3.73	14000	8	490R-08T308
	08	C8	5.50	3	10	490-080C8-08H	80.0	80.0	45.0	3.76	14000	10	490R-08T308
	14	C6	10.00	3	6	490-080C6-14M	63.0	65.0	65.0	2.33	10100	6	490R-1404
	14	C8	10.00	3	6	490-080C8-14M	80.0	80.0	45.0	3.59	10100	6	490R-1404
	14	C6	10.00	3	8	490-080C6-14H	63.0	65.0	65.0	2.33	10100	8	490R-1404
	14	C8	10.00	3	8	490-080C8-14H	80.0	80.0	45.0	3.59	10100	8	490R-1404
84.0	08	C8	5.50	3	8	490-084C8-08M	80.0	60.0		3.13	14000	8	490R-08T308
	08	C8	5.50	3	10	490-084C8-08H	80.0	60.0		3.19	14000	10	490R-08T308
	14	C8	10.00	3	6	490-084C8-14M	80.0	70.0		3.39	9800	6	490R-1404
	14	C8	10.00	3	8	490-084C8-14H	80.0	70.0		3.39	9800	8	490R-1404

Spare parts			
	Insert screw	Shim	Shim screw
08	5513 020-35		
14	5513 020-72	5322 471-01	5512 090-01

For complete list of spare parts, see www.sandvik.coromant.com



I46



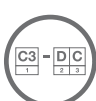
L4



N22



N6



N9



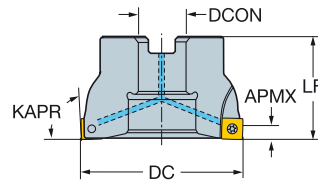
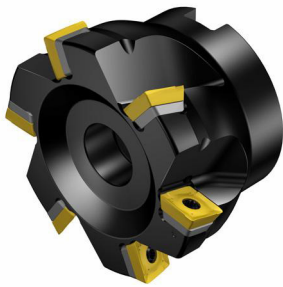
N15

CoroMill® 490 square shoulder milling cutter

Arbor - Internal coolant supply

STDNO
KAPR

ISO 6462:2011
90°



						Dimensions, mm									
DC	CZC _{MS}	APMX _{FFW}	CNSC	Ordering code	DCON	ISO	DBC	LF	RPMX	CICT	MIID				
40.0	08	16	5.50	1	490-040Q16-08M	16.0	A	40.0	0.46	29300	4	490R-08T308			
	08	16	5.50	1	490-040Q16-08H	16.0	A	40.0	0.47	29300	6	490R-08T308			
44.0	08	16	5.50	1	5	490-044Q16-08M	16.0	A	40.0	0.50	27600	5	490R-08T308		
50.0	08	22	5.50	1	4	490-050Q22-08L	22.0	A	40.0	0.66	25500	4	490R-08T308		
	08	22	5.50	1	5	490-050Q22-08M	22.0	A	40.0	0.48	25500	5	490R-08T308		
	08	22	5.50	1	7	490-050Q22-08H	22.0	A	40.0	0.63	25500	7	490R-08T308		
	14	22	10.00	1	4	490-050Q22-14M	22.0	A	40.0	0.62	13700	4	490R-1404		
54.0	14	22	10.00	1	5	490-050Q22-14H	22.0	A	40.0	0.59	22400	5	490R-1404		
	08	22	5.50	1	5	490-054Q22-08M	22.0	A	40.0	0.69	24300	5	490R-08T308		
	14	22	10.00	1	4	490-054Q22-14M	22.0	A	40.0	0.67	13000	4	490R-1404		
63.0	08	22	5.50	1	5	490-063Q22-08L	22.0	A	40.0	0.77	22200	5	490R-08T308		
	08	22	5.50	1	6	490-063Q22-08M	22.0	A	40.0	0.81	22200	6	490R-08T308		
	08	22	5.50	1	8	490-063Q22-08H	22.0	A	40.0	0.77	22200	8	490R-08T308		
	14	22	10.00	1	5	490-063Q22-14M	22.0	A	40.0	0.73	11700	5	490R-1404		
66.0	14	22	10.00	1	6	490-063Q22-14H	22.0	A	40.0	0.71	11700	6	490R-1404		
	08	22	5.50	1	6	490-066Q22-08M	22.0	A	40.0	0.75	21600	6	490R-08T308		
	14	22	10.00	1	5	490-066Q22-14M	22.0	A	40.0	0.76	11400	5	490R-1404		
80.0	08	27	5.50	1	6	490-080Q27-08L	27.0	A	50.0	1.43	19400	6	490R-08T308		
	08	27	5.50	1	8	490-080Q27-08M	27.0	A	50.0	1.39	19400	8	490R-08T308		
	08	27	5.50	1	10	490-080Q27-08H	27.0	A	50.0	1.73	19400	10	490R-08T308		
	14	27	10.00	1	6	490-080Q27-14M	27.0	A	50.0	1.26	10100	6	490R-1404		
84.0	14	27	10.00	1	8	490-080Q27-14H	27.0	A	50.0	1.28	10100	8	490R-1404		
	08	27	5.50	1	8	490-084Q27-08M	27.0	A	50.0	1.78	18900	8	490R-08T308		
100.0	14	27	10.00	1	6	490-084Q27-14M	27.0	A	50.0	1.61	9800	6	490R-1404		
	08	32	5.50	0	6	490-100Q32-08L	32.0	B	50.0	2.15	17100	6	490R-08T308		
	08	32	5.50	0	8	490-100Q32-08M	32.0	B	50.0	2.10	17100	8	490R-08T308		
	08	32	5.50	0	10	490-100Q32-08H	32.0	B	50.0	2.10	17100	10	490R-08T308		
	14	32	10.00	1	5	490-100Q32-14L	32.0	B	50.0	2.07	8900	5	490R-1404		
	14	32	10.00	1	7	490-100Q32-14M	32.0	B	50.0	1.99	8900	7	490R-1404		
125.0	14	32	10.00	1	10	490-100Q32-14H	32.0	B	50.0	2.00	8900	10	490R-1404		
	08	40	5.50	0	8	490-125Q40-08L	40.0	B	63.0	3.51	15200	8	490R-08T308		
	08	40	5.50	0	10	490-125Q40-08M	40.0	B	63.0	3.44	15200	10	490R-08T308		
	08	40	5.50	0	12	490-125Q40-08H	40.0	B	63.0	3.46	15200	12	490R-08T308		
	14	40	10.00	1	6	490-125Q40-14L	40.0	B	63.0	3.37	7800	6	490R-1404		
	14	40	10.00	1	8	490-125Q40-14M	40.0	B	63.0	3.05	7800	8	490R-1404		
160.0	14	40	10.00	1	12	490-125Q40-14H	40.0	B	63.0	3.29	7800	12	490R-1404		
	14	40S	10.00	0	8	490-160Q40-14L	40.0	C	66.7	63.0	5.05	6800	8	490R-1404	
	14	40S	10.00	0	12	490-160Q40-14M	40.0	C	66.7	63.0	5.01	6800	12	490R-1404	
200.0	14	40S	10.00	0	15	490-160Q40-14H	40.0	C	66.7	63.0	5.06	6800	15	490R-1404	
	14	60	10.00	0	10	490-200Q60-14L	60.0	C	101.6	63.0	13.11	6000	10	490R-1404	
250.0	14	60	10.00	0	16	490-200Q60-14M	60.0	C	101.6	63.0	11.79	6000	16	490R-1404	
	14	60	10.00	0	12	490-250Q60-14L	60.0	C	101.6	63.0	17.66	5300	12	490R-1404	
14	60	10.00	0	18	490-250Q60-14M	60.0	C	101.6	63.0	17.52	5300	18	490R-1404		

For spare parts, visit www.sandvik.coromant.com



146



L4



M2



N22



N6



N9

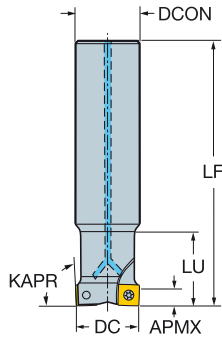


N15

CoroMill® 490 square shoulder milling cutter

Cylindrical shank - Internal coolant supply

KAPR 90°



						Dimensions, mm						
DC	CZC _{MS}	APMX _{FFW}	CNSC	Ordering code	DCON	LF	LU	KG	RPMX	CICT	MIID	
20.0	08	16	5.50	1 2	490-020A16-08L	16.0	100.0	0.24	48500	2	490R-08T308	
	08	20	5.50	1 2	490-020A20-08L	20.0	110.0	0.33	48500	2	490R-08T308	
22.0	08	20	5.50	1 2	490-022A20L-08L	20.0	170.0	0.47	20300	2	490R-08T308	
25.0	08	20	5.50	1 2	490-025A20-08L	20.0	110.0	0.34	40400	2	490R-08T308	
	08	25	5.50	1 2	490-025A25-08L	25.0	120.0	0.49	40400	2	490R-08T308	
	08	20	5.50	1 3	490-025A20-08M	20.0	110.0	0.32	40400	3	490R-08T308	
	08	25	5.50	1 3	490-025A25-08M	25.0	120.0	0.46	40400	3	490R-08T308	
28.0	08	25	5.50	1 2	490-028A25L-08L	25.0	210.0	0.84	11000	2	490R-08T308	
32.0	08	25	5.50	1 3	490-032A25-08L	25.0	120.0	0.55	33900	3	490R-08T308	
	08	32	5.50	1 3	490-032A32-08L	32.0	130.0	0.81	33900	3	490R-08T308	
	08	25	5.50	1 4	490-032A25-08M	25.0	120.0	0.55	33900	4	490R-08T308	
	08	32	5.50	1 4	490-032A32-08M	32.0	130.0	0.81	33900	4	490R-08T308	
40.0	08	32	5.50	1 3	490-040A32-08L	32.0	170.0	1.18	20300	3	490R-08T308	
	08	32	5.50	1 4	490-040A32-08M	32.0	170.0	1.16	20300	4	490R-08T308	
	08	32	5.50	1 6	490-040A32-08H	32.0	170.0	1.18	20300	6	490R-08T308	
14	32	10.00	1 3	490-040A32-14M	32.0	170.0	1.12	26400	3	490R-1404		
14	32	10.00	1 3	490-040A32L-14M	32.0	250.0	1.77	7600	3	490R-1404		
14	32	10.00	1 4	490-040A32-14H	32.0	170.0	1.13	26400	4	490R-1404		
50.0	14	32	10.00	1 3	490-050A32-14L	32.0	120.0	1.07	13700	3	490R-1404	
14	32	10.00	1 4	490-050A32-14M	32.0	120.0	1.09	13700	4	490R-1404		
63.0	14	32	10.00	1 4	490-063A32-14L	32.0	120.0	1.43	11700	4	490R-1404	
14	32	10.00	1 5	490-063A32-14M	32.0	120.0	1.43	11700	5	490R-1404		

Spare parts			
	Insert screw	Shim	Shim screw
08	5513 020-35		
14	5513 020-72	5322 471-01	5512 090-01

For complete list of spare parts, see www.sandvik.coromant.com



I46



L4



N22



N6



N9

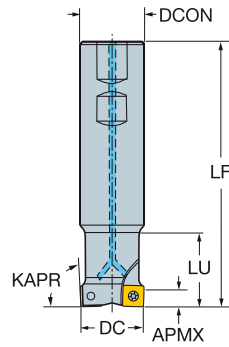


N15


CoroMill® 490 square shoulder milling cutter

Weldon - Internal coolant supply

KAPR 90°



							Dimensions, mm						
DC	CZC _{MS}	APMX _{FFW}	CNSC	Ordering code	DCON	LF	LU	RPM	CICT	MIID			
20.0	08	16	5.50	1	2	490-020B16-08L	16.0	74.0	0.20	48500	2	490R-08T308	
08	20	5.50	1	2	490-020B20-08L	20.0	76.0	25.0	0.25	48500	2	490R-08T308	
25.0	08	20	5.50	1	2	490-025B20-08L	20.0	83.0	0.28	40400	2	490R-08T308	
08	25	5.50	1	3	490-025B25-08M	25.0	88.0	32.0	0.37	40400	3	490R-08T308	
32.0	08	25	5.50	1	3	490-032B25-08L	25.0	98.0	0.46	33900	3	490R-08T308	
08	32	5.50	1	3	490-032B32-08L	32.0	100.0	40.0	0.62	33900	3	490R-08T308	
08	25	5.50	1	4	490-032B25-08M	25.0	98.0	0.47	33900	4	490R-08T308		
08	32	5.50	1	4	490-032B32-08M	32.0	100.0	40.0	0.62	33900	4	490R-08T308	
40.0	08	32	5.50	1	4	490-040B32-08M	32.0	112.0	0.79	29300	4	490R-08T308	
08	32	5.50	1	6	490-040B32-08H	32.0	112.0	0.81	29300	6	490R-08T308		
14	32	10.00	1	3	490-040B32-14M	32.0	112.0	0.76	26400	3	490R-1404		
14	32	10.00	1	4	490-040B32-14H	32.0	112.0	0.77	26400	4	490R-1404		

Spare parts	
	Insert screw
08	5513 020-35
14	5513 020-72

For complete list of spare parts, see www.sandvik.coromant.com



146



L4



N22



N6



N9

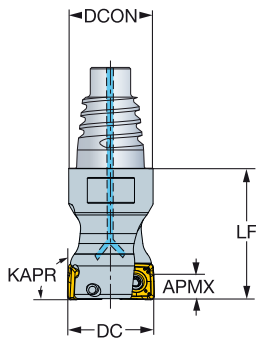


N15

CoroMill® 490 square shoulder milling cutter

Coromant EH - Internal coolant supply

KAPR 90°



						Dimensions, mm						
DC	CZC _{MS}	APMX _{FFW}	CNSC	Ordering code		DCON	LF	KG	RPMX	CICT	MIID	
20.0	08	E20	5.50	1	2	490-020EH20-08L	19.3	30.0	0.14	48500	2	490R-08T308
25.0	08	E25	5.50	1	2	490-025EH25-08L	24.2	35.0	0.18	40400	2	490R-08T308
	08	E25	5.50	1	3	490-025EH25-08M	24.2	35.0	0.19	40400	3	490R-08T308
32.0	08	E25	5.50	1	3	490-032EH25-08L	24.2	35.0	0.21	33900	3	490R-08T308
	08	E25	5.50	1	4	490-032EH25-08M	24.2	35.0	0.21	33900	4	490R-08T308

Spare parts		
DC		Insert screw
20.00	08	5513 020-36
25.00-32.00	08	5513 020-35

For complete list of spare parts, see www.sandvik.coromant.com



I46



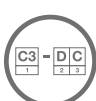
L4



N22



N6



N9



N15

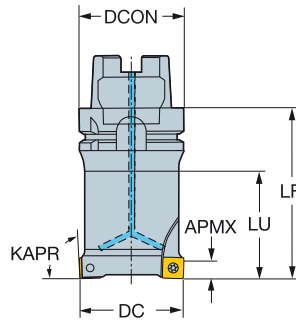



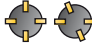

N3

CoroMill® 490 square shoulder milling cutter

HSK - Internal coolant supply

KAPR 90°



							Dimensions, mm						
DC		CZC _{MS}	APMX _{FFW}	CNSC		Ordering code	DCON	LF	LU		RPM	CICT	MIID
20.0	08	63	5.50	1	2	490-020HA06-08L	63.0	95.0	40.0	1.27	30000	2	490R-08T308
25.0	08	63	5.50	1	3	490-025HA06-08M	63.0	95.0	50.0	1.25	30000	3	490R-08T308
32.0	08	63	5.50	1	4	490-032HA06-08M	63.0	95.0	58.0	1.33	30000	4	490R-08T308
40.0	08	63	5.50	1	6	490-040HA06-08H	63.0	95.0	58.0	1.57	29300	6	490R-08T308
50.0	08	63	5.50	1	5	490-050HA06-08M	63.0	95.0	63.0	1.84	25500	5	490R-08T308
	08	63	5.50	1	7	490-050HA06-08H	63.0	95.0	58.0	1.86	25500	7	490R-08T308
63.0	08	63	5.50	1	6	490-063HA06-08M	63.0	70.0	44.0	1.81	22200	6	490R-08T308
	08	63	5.50	1	8	490-063HA06-08H	63.0	70.0	44.0	1.80	22200	8	490R-08T308
80.0	08	63	5.50	1	8	490-080HA06-08M	63.0	70.0		2.03	19400	8	490R-08T308

Spare parts

Insert screw
5513 020-35

For complete list of spare parts, see www.sandvik.coromant.com



I46



L4



N22



N6



N9

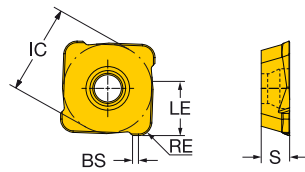
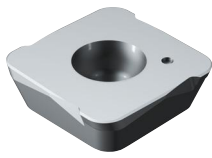


N15

CoroMill® 490 insert for milling

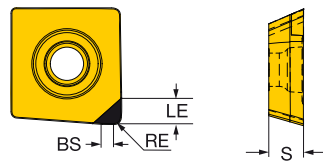
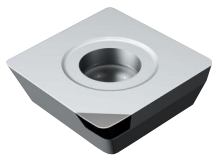
Advanced cutting materials

KRINS 90°



				K	H	Dimensions, mm			
				6190	6190	IC	LE	S	BS
		RE	Ordering code	★	☆	13.8	5.0	3.90	0.8
Medium	PO	14	2.00	490R-140420E					

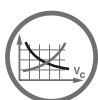
KRINS 90°



				K	H	Dimensions, mm			
				0850	0850	IC	LE	S	BS
		RE	Ordering code	★	★	13.8	2.0	3.90	1.5
Medium	PO	14	0.80	490R-140408E					



139



1146



1168



N22



N10