

# CoroMill® Century

Light cutting face mill for high speed finishing

## Application

- Square shoulder milling
- Face milling

## ISO application area:



## Benefits and features

- High speed machining security by design
- Intensified chip evacuation through accelerated cutting fluid
- Easy setting to micro precision within 0.1 mm setting range
- High-alloy aluminium body with Arbor mounting
- Wiper insert option for high feed finishing

[www.sandvik.coromant.com/coromillcentury](http://www.sandvik.coromant.com/coromillcentury)

## Couplings

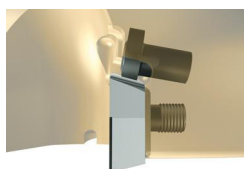
- Coromant Capto®
- Arbor
- HSK

## Inserts

- One or two cutting edges
- Wide assortment of corner radii and chamfer
- Insert geometries and grades for all materials including PCD and CBN

## Micro setting

Micro precision setting of insert within 0.1 mm setting range on cassette solution.

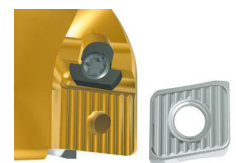


## Macro setting

Macro setting of insert within 1 mm setting range.

## Insert setting

Serrated insert location gives very high security against insert movement.



175



178

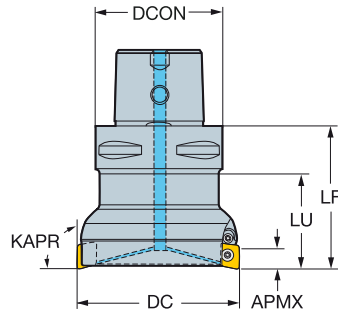


N6

# CoroMill® Century square shoulder milling cutter

Coromant Capto® - Internal coolant supply

KAPR 90°



							Dimensions, mm						
DC	CZC <sub>MS</sub>	APMX <sub>FFW</sub>	CNSC	ZADJ	Ordering code	DCON	LF	LU	KG	RPMX	CICT	MIID	
40.0	11	C3	11.00	3	3	R590-040C3-11M	32.0	55.0	40.0	0.65	48000	3	R590-1105..
	11	C4	11.00	3	3	R590-040C4-11M	40.0	63.0	40.0	0.83	39000	3	R590-1105..
50.0	11	C5	11.00	3	4	R590-050C5-11M	50.0	63.0	40.0	1.38	28000	4	R590-1105..
63.0	11	C5	11.00	3	5	R590-063C5-11M	50.0	63.0	40.0	1.50	28000	5	R590-1105..
80.0	11	C6	11.00	3	6	R590-080C6-11M	63.0	71.0	40.0	2.38	20000	6	R590-1105..

## Spare parts

Insert screw	Setting device	Setting device screw
5513 020-25	5513 014-021	5513 014-02

For complete list of spare parts, see [www.sandvik.coromant.com](http://www.sandvik.coromant.com)



I78



L4



N22



N9



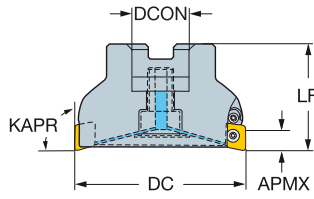
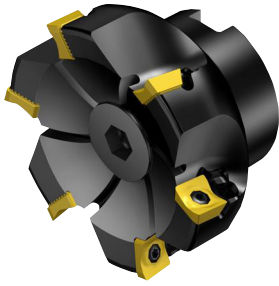
N15

# CoroMill® Century square shoulder milling cutter

Arbor - Internal coolant supply

STDNO  
KAPR

ISO 6462:2011  
90°



										Dimensions, mm						
DC	CZC <sub>MS</sub>	APMX <sub>FW</sub>	CNSC	ZADJ	Ordering code	DCON	ISO	DBC	LF	KG	RPMX	CICT	MIID			
50.0	11	22	11.00	1	4	4	R590-050Q22S-11M	22.0	A	40.0	0.68	41600	4	R590-1105..		
63.0	11	22	11.00	1	5	5	R590-063Q22S-11M	22.0	A	40.0	0.81	35100	5	R590-1105..		
80.0	11	27	11.00	1	6	6	R590-080Q27A-11M	27.0	A	50.0	1.08	27500	6	R590-1105..		
	11	27	11.00	1	6	6	R590-080Q27S-11M	27.0	A	50.0	1.57	27500	6	R590-1105..		
100.0	11	32	11.00	1	6	6	R590-100Q32A-11M	32.0	A	50.0	1.37	23800	6	R590-1105..		
	11	32	11.00	1	6	6	R590-100Q32S-11M	32.0	A	50.0	2.21	23800	6	R590-1105..		
125.0	11	40	11.00	1	8	8	R590-125Q40A-11M	40.0	B	63.0	1.84	20700	8	R590-1105..		
	11	40	11.00	1	8	8	R590-125Q40S-11M	40.0	B	63.0	3.34	20700	8	R590-1105..		
160.0	11	40	11.00	1	10	10	R590-160Q40A-11M	40.0	B	63.0	2.74	17900	10	R590-1105..		
	11	40	11.00	1	10	10	R590-160Q40S-11M	40.0	B	63.0	5.65	17900	10	R590-1105..		
200.0	11	60	11.00	0	16	16	R590-200Q60A-11M	60.0	C	101.6	7.26	15700	16	R590-1105..		
	11	60	11.00	0	16	16	R590-200Q60S-11M	60.0	C	101.6	12.00	15700	16	R590-1105..		

Spare parts					
DC	Insert screw	Shower screw	Setting device	Setting device screw	
50.00-63.00	11 5513 020-25	5512 087-01	5513 014-021	5513 014-02	
80.00	11 5513 020-25	5512 087-02	5513 014-021	5513 014-02	
100.00	11 5513 020-25	5512 087-03	5513 014-021	5513 014-02	
125.00-160.00	11 5513 020-25	5512 098-03	5513 014-021	5513 014-02	
200.00	11 5513 020-25		5513 014-021	5513 014-02	

For complete list of spare parts, see [www.sandvik.coromant.com](http://www.sandvik.coromant.com)



I78



L4



M2



N22



N9

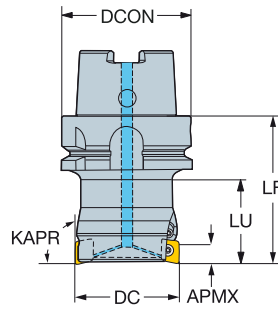


N15

# CoroMill® Century square shoulder milling cutter

HSK - Internal coolant supply

KAPR 90°



								Dimensions, mm						
DC	CZC <sub>MS</sub>	APMX <sub>FFW</sub>	CNSC	ZADJ	Ordering code	DCON	LF	LU	KG	RPMX	CICT	MIID		
40.0	11	63	11.00	1 3 3	R590-040HA06-11M	63.0	71.0	40.0	1.41	20000	3	R590-1105..		
50.0	11	63	11.00	1 4 4	R590-050HA06-11M	63.0	71.0	40.0	1.58	20000	4	R590-1105..		

## Spare parts

Insert screw	Setting device	Setting device screw
5513 020-25	5513 014-021	5513 014-02

For complete list of spare parts, see [www.sandvik.coromant.com](http://www.sandvik.coromant.com)



178



L4



N22



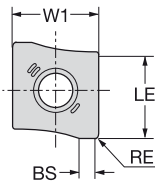
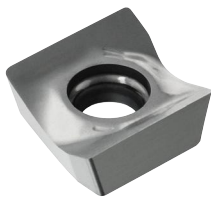
N9



N15

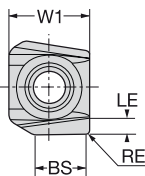
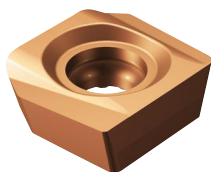
# CoroMill® Century insert for milling

KRINS 90°



	RE	Ordering code	Dimensions, mm								
			K	N	H	S					
Light	KL	11 0.80	R590-110508H-KL	1020	H10	H10	1130	W1	LE	S	BS
	NL	11 0.40	R590-110504H-NL	☆	☆	☆	☆	11.5	11.0	5.00	2.0
	PL	11 0.80	R590-110508H-PL				☆	11.5	11.0	5.00	1.7

KRINS 90°



**Wiper** TECHNOLOGY

	RE	Ordering code	Dimensions, mm											
			P	M	K	N	S	H						
Light	KTW	11 0.40	R590-110504H-KTW	1130	1130	1020	1130	1130	1130	W1	LE	S	BS	BSR
	KW	11 0.80	R590-110508H-KW						☆	11.5	11.0	5.00	7.0	500.0
	NW	11 0.40	R590-110504H-NW						☆	11.5	11.0	5.00	7.0	500.0
	PTW	11 0.40	R590-110504H-PTW	☆	☆	☆	☆	☆	☆	11.5	11.0	5.00	7.0	
	PW	11 0.80	R590-110508H-PW	☆	☆	☆	☆	☆	☆	11.5	11.0	5.00	7.0	500.0

Make sure to choose working insert and wiper insert with the same RE/KCH values



I75



I146



I168



N22



N6



N10

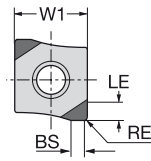
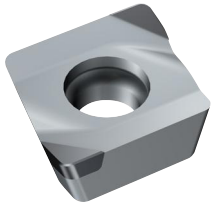


N2

# CoroMill® Century insert for milling

Advanced cutting materials

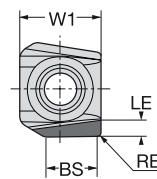
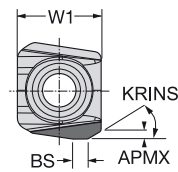
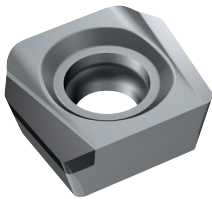
KRINS 90°



		RE	KCH	CHW	Ordering code	Dimensions, mm						
						CB50	CB50	W1	LE	S	BS	BSR
Light	KL	11	30°	1.0	L590-1105H-ZC2-KL	☆	☆	11.5	3.0	5.00	2.3	200.0
			60°	1.5	R590-1105H-ZC2-KL	☆	☆	11.5	3.0	5.00	2.3	200.0
Medium	KM	11	0.80		R590-110508H-PR2-KM	☆	☆	11.5	2.0	5.00	1.5	25.0

KRINS 90°  
R/L590..H-Z..-KW

90°  
R590..PR2-KW



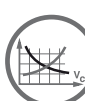
TECHNOLOGY  
**Wiper**

		RE	KCH	CHW	Ordering code	Dimensions, mm						
						CB50	CB50	W1	LE	S	BS	BSR
Light	KL	11	30°	1.0	L590-1105H-ZC2-KL	☆	☆	11.5	3.0	5.00	2.3	200.0
			60°	1.5	R590-1105H-ZC2-KL	☆	☆	11.5	3.0	5.00	2.3	200.0
	KW	11	30°	1.0	L590-1105H-ZC2-KW	☆	☆	11.5	3.0	5.00	5.9	390.0
			60°	1.5	R590-1105H-ZC2-KW	☆	☆	11.5	3.0	5.00	5.9	390.0
	NW	11	0.80		R590-110508H-PR2-KW	☆	☆	11.5	2.0	5.00	7.1	393.0
Medium	KM	11	0.80		R590-110508H-PR2-KM	☆	☆	11.5	2.0	5.00	1.5	25.0

Make sure to choose working insert and wiper insert with the same RE/KCH values



175



1146



1168



N22



N6



N10

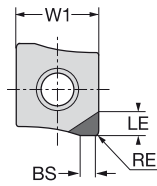


N2

# CoroMill® Century insert for milling

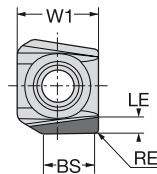
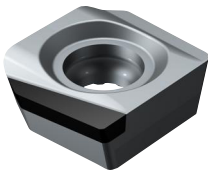
Advanced cutting materials

KRINS 90°



		N Dimensions, mm									
Light	NL	RE	KCH	CHW	Ordering code	CD10	W1	LE	S	BS	BSR
		45°	1.0	R590-1105H-PC5-NL	★	11.5	6.0	5.00	1.5	200.0	
		0.40		R590-1105H-PR2-NL	★	11.5	3.0	5.00	2.2	200.0	
		0.40		R590-1105H-PR5-NL	★	11.5	6.0	5.00	2.2	200.0	
		45°	0.3	R590-1105H-PS2-NL	★	11.5	3.0	5.00	2.2	200.0	
		45°	0.1	R590-1105H-PS5-NL	★	11.5	6.0	5.00	2.2	200.0	

KRINS 90°



**Wiper** TECHNOLOGY

		N Dimensions, mm									
Light	NW	RE	KCH	CHW	Ordering code	CD10	W1	LE	S	BS	BSR
		0.40		R590-1105H-RR2-NW	☆	11.5	3.0	5.00	6.8	500.0	
		45°	0.3	R590-1105H-RS2-NW	☆	11.5	3.0	5.00	7.0	500.0	

Make sure to choose working insert and wiper insert with the same RE/KCH values



I75



I146



I168



N22



N6



N10



N2