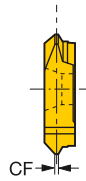
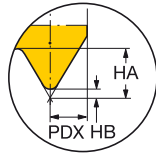
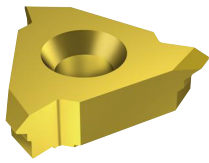


CoroMill® 328 insert for thread milling

For internal threads



Metric 60° Full form

				Dimensions, mm			
SSC	TP	NT	Ordering code	CF	HA	HB	PDX
13	1.50	1	328R13-150 MM-TH	0.2	0.97	0.16	0.85
	2.00	1	328R13-200 MM-TH	0.3	1.30	0.22	1.05
	3.00	1	328R13-300 MM-TH	0.4	1.95	0.32	1.35
	3.50	1	328R13-350 MM-TH	0.4	2.27	0.38	1.55
	4.00	1	328R13-400 MM-TH	0.5	2.60	0.43	1.75
	4.50	1	328R13-450 MM-TH	0.6	2.92	0.49	1.95
	5.00	1	328R13-500 MM-TH	0.6	3.25	0.54	2.05
	5.50	1	328R13-550 MM-TH	0.7	3.57	0.60	2.30
	6.00	1	328R13-600 MM-TH	0.8	3.90	0.65	2.45

UN 60° Full form

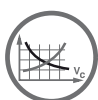
				Dimensions, mm			
SSC	TPI	NT	Ordering code	CF	HA	HB	PDX
13	16.0	1	328R13-16 UN-TH	0.2	1.02	0.16	0.80
	14.0	1	328R13-14 UN-TH	0.2	1.17	0.19	0.90
	12.0	1	328R13-12 UN-TH	0.3	1.38	0.23	1.00
	10.0	1	328R13-10 UN-TH	0.3	1.64	0.27	1.15
	8.0	1	328R13-08 UN-TH	0.4	2.06	0.34	1.40
	6.0	1	328R13-06 UN-TH	0.5	2.74	0.45	1.80
	4.0	1	328R13-04 UN-TH	0.8	4.12	0.68	2.55

V-profile 60°

						Dimensions, mm				
SSC	TPN	TPX	TPIN	TPIX	NT	Ordering code	CF	HA	HB	PDX
13	1.5	3.5	7.0	16.0	1	328R13-150 VM-TH	0.2	2.31	0.13	1.95
	4.0	6.0	4.0	6.0	1	328R13-400 VM-TH	0.5	4.06	0.41	2.60



I134



I146



I168



N22



N12