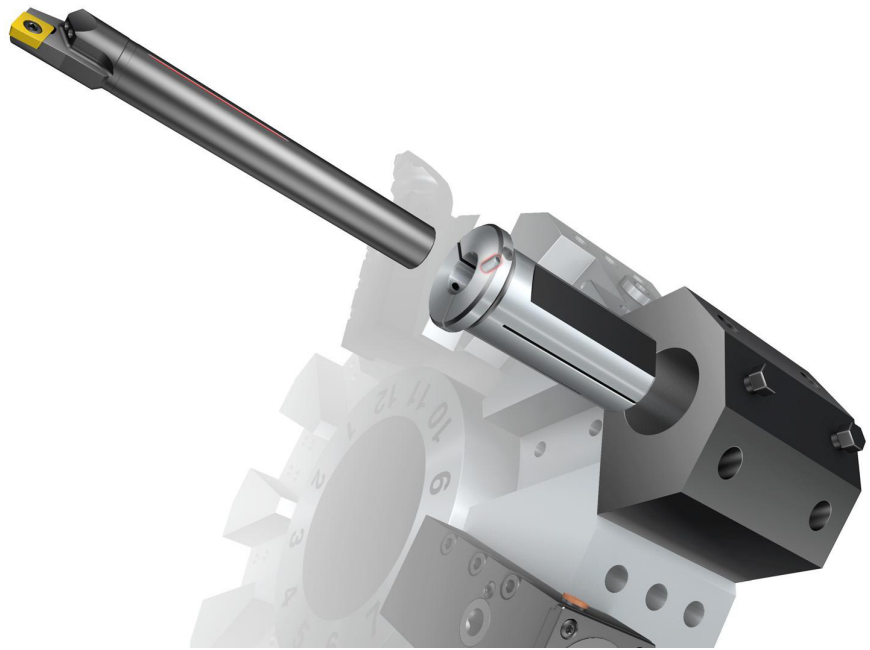


EasyFix™

Sleeves for cylindrical bars



Benefits and features

- Fast set-up time
- Simple to use
- Extended tool life
- Excellent surface finish
- Correct cutting edge centre height and position

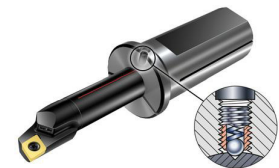
Precision coolant

The slot in the cylindrical sleeve is metallic sealed which allows the existing coolant supply system to be used. The metallic sealing offers good performance also for high coolant pressure.

- Silicon sealing for coolant pressures up to 20 bar (290 psi)
- Metallic sealing for coolant pressure up to 150 bar (2200 psi)

Always correct centre height

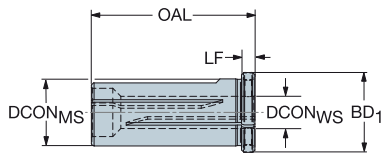
Spring plunger solution (spring loaded ball) in the sleeve and the bar groove gives correct centre height of the insert every time you make a tool set-up.



Cylindrical sleeve with Easy-Fix positioning

ISO 9766

Metallic sealed for high pressure coolant through tool



					Dimensions, mm									
CZC _{MS}	CZC _{WS}	CNSC	CXSC	Ordering code	DCON _{MS}	DCON _{WS}	BD ₁	H	OAL	LF	BAR	KG		
16	5	1	1	EF-16-05	16	5	21	14	48	5	150	0.130		
	6	1	1	EF-16-06	16	6	21	14	48	5	150	0.110		
	8	1	1	EF-16-08	16	8	21	14	48	5	150	0.100		
	10	1	1	EF-16-10	16	10	21	14	48	5	150	0.080		
	12	1	1	EF-16-12	16	12	21	14	48	5	150	0.065		
20	5	1	1	EF-20-05	20	5	25	18	55	5	150	0.120		
	6	1	1	EF-20-06	20	6	25	18	55	5	150	0.118		
	8	1	1	EF-20-08	20	8	25	18	55	5	150	0.115		
	10	1	1	EF-20-10	20	10	25	18	55	5	150	0.109		
	12	1	1	EF-20-12	20	12	25	18	55	5	150	0.099		
	16	1	1	EF-20-16	20	16	25	18	55	5	150	0.080		
25	20	1	1	EF-25-20	25	20	30	23	61	5	150	0.080		
	5	1	1	EF-25-05	25	5	30	23	61	5	150	0.208		
	6	1	1	EF-25-06	25	6	30	23	61	5	150	0.199		
	8	1	1	EF-25-08	25	8	30	23	61	5	150	0.200		
	10	1	1	EF-25-10	25	10	30	23	61	5	150	0.190		
	12	1	1	EF-25-12	25	12	30	23	61	5	150	0.178		
32	16	1	1	EF-25-16	25	16	30	23	61	5	150	0.150		
	25	1	1	EF-32-25	32	25	36	30	65	5	150	0.120		
	5	1	1	EF-32-05	32	5	36	30	65	5	150	0.344		
	6	1	1	EF-32-06	32	6	36	30	65	5	150	0.345		
	8	1	1	EF-32-08	32	8	36	30	65	5	150	0.340		
	10	1	1	EF-32-10	32	10	36	30	65	5	150	0.350		
	12	1	1	EF-32-12	32	12	36	30	65	5	150	0.332		
	16	1	1	EF-32-16	32	16	36	30	65	5	150	0.299		
40	20	1	1	EF-32-20	32	20	36	30	65	5	150	0.269		
	5	1	1	EF-40-05	40	5	44	38	75	5	150	0.606		
	6	1	1	EF-40-06	40	6	44	38	75	5	150	0.604		
	8	1	1	EF-40-08	40	8	44	38	75	5	150	0.620		
	10	1	1	EF-40-10	40	10	44	38	75	5	150	0.632		
F	12	1	1	EF-40-12	40	12	44	38	75	5	150	0.629		
	16	1	1	EF-40-16	40	16	44	38	75	5	150	0.587		
	20	1	1	EF-40-20	40	20	44	38	75	5	150	0.562		
	25	1	1	EF-40-25	40	25	44	38	75	5	150	0.461		

To be used with ISO 9766 adaptors, see Rotating tool adaptors chapter in Rotating tools catalogue or sandvik.coromant.com

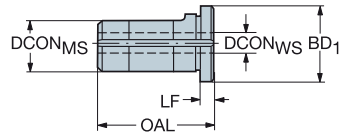
G

H



H36

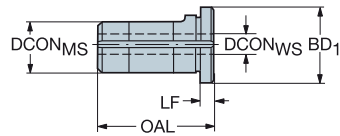
Cylindrical sleeve with Easy-Fix positioning



				Dimensions, mm									
CZC _{MS}	CZC _{WS}	CNSC	CXSC	Ordering code	DCON _{MS}	DCON _{WS}	BD ₁	H	OAL	LF	BAR	KG	
32	20	1	1	132L-3220085-B	32	20	38	30	85	5	20	0.326	
40	20	1	1	132L-4020105-B	40	20	46	38	105	5	20	0.758	
	25	1	1	132L-4025105-B	40	25	46	38	105	5	20	0.620	
50	20	1	1	132L-5020125-B	50	20	56	47	125	5	20	1.576	
	25	1	1	132L-5025125-B	50	25	56	47	125	5	20	1.396	

Groove for EasyFix sleeve is available on all cylindrical boring bars in diameter 5-25 mm

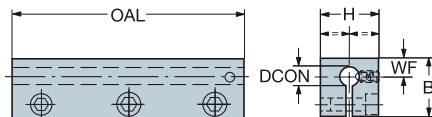
Cylindrical sleeve



				Dimensions, mm									
CZC _{MS}	CZC _{WS}	CNSC	CXSC	Ordering code	DCON _{MS}	DCON _{WS}	BD ₁	OAL	LF	BAR	KG		
40	32	1	1	132L-40-32	40	32	50	128	5	150	0.430		
50	32	1	1	132L-50-32	50	32	60	128	5	150	1.100		
	40	1	1	132L-50-40	50	40	60	160	5	150	0.840		
60	32	1	1	132L-60-32	60	32	70	128	5	150	1.900		
	40	1	1	132L-60-40	60	40	70	160	5	150	1.900		
	50	1	1	132L-60-50	60	50	70	200	5	150	1.300		

Screw down (No EasyFix)

Square sleeve with Easy-Fix positioning



				Dimensions, mm									
CZC _{MS}	CZC _{WS}	Ordering code		DCON	DCON _{WS}	B	H	OAL	WF	HF	KG		
20 x 20	5	131-2005-B		5	5	20	20	80	5.5	10.0	0.232		
	6	131-2006-B		6	6	20	20	80	6.0	10.0	0.228		
	8	131-2008-B		8	8	20	20	80	7.0	10.0	0.218		
	10	131-2010-B		10	10	20	20	80	7.5	10.0	0.201		
25 x 25	12	131-2512-B		12	12	25	25	80	9.0	12.5	0.328		
	16	131-2516-B		16	16	25	25	80	10.0	12.5	0.276		
32 x 40	20	131-3220-B		20	20	40	32	100	12.0	16.0	0.752		
	25	131-3225-B		25	25	40	32	100	14.5	16.0	0.630		

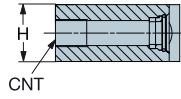
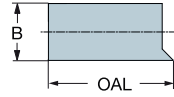
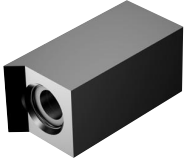
H36



A

Stop for QS™ holding system

B



Dimensions, mm

C

Ordering code	OAL	B	H	CNT
QS-2020HP	44.0	20.0	20.0	G1/8"
QS-2525HP	44.0	25.0	25.0	G1/8"

D

E

F

G

H



H36